

# COMMANDCENTRAL VAULT

## OPERATIONS SIMPLIFIED



You need a digital evidence management solution that securely and efficiently stores all forms of multimedia and allows your agency to easily review, manage and share content, including evidence. CommandCentral Vault provides an advanced end-to-end content management solution that is secure and feature-rich with predictable pricing designed to streamline your operations. With CommandCentral Vault you can reduce administrative overhead and simplify workflows while maintaining policy and compliance to help save time and enhance community support.

### REQUEST A DEMO:

Register online at [motorolasolutions.com/spssdemo](https://motorolasolutions.com/spssdemo)

### SOLID SECURITY

Content captured in the field is digitally signed to ensure authenticity when stored in CommandCentral Vault. The original content is always preserved and every action taken on content is logged for comprehensive audit and chain of custody needs.

CommandCentral Vault is built on the, CJIS compliant, Amazon Web Services GovCloud. From the moment content is created and stored to when it's shared, it is fully secured.

## TRANSFORMING DIGITAL EVIDENCE MANAGEMENT

Motorola's CommandCentral Vault is more than just storage, it's true end-to-end content management. All content is securely stored, simple to manage and easy to share with judicial personnel, citizens and media. CommandCentral Vault provides all the tools necessary to streamline workflows. Now your agency can reduce administrative time, simplify management and provide greater transparency faster than ever.

**Example:** A citizen recorded altercation goes viral and the officers are accused of excessive force. After they return to the station, video is automatically uploaded without user intervention. Simplified content management allows the officers to annotate, add additional tags and mark the videos for additional review. Command staff and the public information officer are able to easily search and review the marked videos from their mobile devices and prepare them for distribution. An analyst using auto-redaction quickly edits the videos to protect the privacy of innocent individuals. Using the FOIA workflow, the agency provides the redacted video to the media within hours, showing the officers' response was warranted and legal.

## KEY USERS



### Officer

Upload content, then search, review, annotate, mark, tag, clip and organize efficiently.



### Detective

Easily search and review content details in a geospatial view with audit and retention control.



### Records Specialist

Expedite redaction through automation, create clips, control content, set policies and securely distribute content with ease.



### Citizen

Request content through a web-based portal, make payments easily and get secured, restricted access to approved content.

## FEATURES

### • Secured Content:

Original content is never editable and digitally signed to provide a cryptographically secure method to prove authenticity and chain-of-custody with cloud storage that meets CJIS standards.

### • Automated Redaction:

Eliminate tedious frame-by-frame redaction. Simply select the objects or people in a video and the redaction is applied across all frames automatically.

### • Automatic Correlation:

When linked to your CAD system or RMS, CommandCentral Vault can automatically correlate related evidence from external systems and group them in case folders to reduce administrative overhead searching for content (requires Manage module).

### • Complete Auditing:

Every action taken on stored content is tracked for greater transparency and accountability.

### • Evidence Sharing:

Customizable, easy-to-understand forms and workflows are available to distribute content to judicial personnel as well as citizens and media (requires Judicial or FOIA module).

### • Geospatial Video Review:

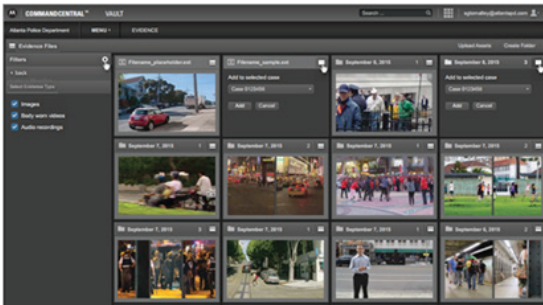
Integrated maps with geotagged locations of recorded content allows for simplified content review.

### • CommandCentral Integration:

Metadata stored in CommandCentral Vault can be reused in other CommandCentral applications to increase actionable intelligence.

### • Retention Policies:

Flag evidence to prevent deletion and retain content for different lengths based on incident type, capture date and case association based on your agency's policies.



Search through all recordings based on keywords, location or participating parties.

## AVAILABLE MODULES

### Store

The Store module is the baseline package provided for CommandCentral Vault and is offered on a per user license basis. Store users can seamlessly upload content into secure cloud storage that meets CJIS standards.

It provides the following additional capabilities:

- Annotate images and video during review
- Automatic association of stored content with CAD/RMS data
- Review content and associated metadata with geospatial mapping playback
- Chain of custody controls to preserve and verify original content
- Mark content to adhere to retention policies

### Manage (Optional)

In addition to Store capabilities you receive:

- Agency-wide content search for permitted users
- Enhanced review functionality with playback speed controls
- Additional administrative content restriction controls
- Automated redaction based on facial and/or object recognition

### Judicial (Optional)

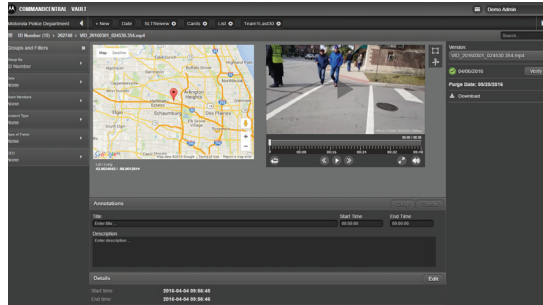
In addition to Store capabilities you receive:

- The ability to create video clips of specific evidence related to a judicial request
- The ability to restrict access based on permissions
- Secure links to requested content to maintain chain of custody
- Automated redaction based on facial and/or object recognition

### FOIA (Optional)

In addition to Store capabilities you receive:

- A secure, agency-branded web portal to enable FOIA requests from the public
- The ability to collect payments for FOIA requests
- The ability to tailor customizable workflow forms to your agency needs
- Automated redaction based on facial and/or object recognition



Geospatial content review allows personnel to see exactly where officers were located throughout their recording.

## PREDICTABLE COSTS

CommandCentral Vault provides your agency with simplified, predictable pricing to easily plan and budget expenses for a body-worn camera (BWC) program. As a cloud-based application, there is no complex integration or need for infrastructure and additional IT administrative overhead. Monthly subscription costs are based on the number of BWC users and role-based access is available to all agency personnel at no additional cost.

## DIGITAL EVIDENCE MANAGEMENT SOLUTION

CommandCentral Vault, when combined with the Si300 or Si500 video speaker microphone, creates a complete digital evidence management solution. The combined solution features wireless upload and automatic metadata correlation to simplify content management and reduce administrative overhead. With intuitive and intelligent software automating actions for personnel in the street and back office, this end-to-end solution is paving the way for a new era in digital evidence management. Learn more at [www.motorolasolutions.com/dems](http://www.motorolasolutions.com/dems)

For more information about CommandCentral Vault, contact your Motorola representative or visit [motorolasolutions.com/commandcentralvault](http://motorolasolutions.com/commandcentralvault)

MOTOROLA, MOTO, MOTOROLA SOLUTIONS and the Stylized M Logo are trademarks or registered trademarks of Motorola Trademark Holdings, LLC and are used under license. All other trademarks are the property of their respective owners. ©2016 Motorola, Inc. All rights reserved. 05-2016